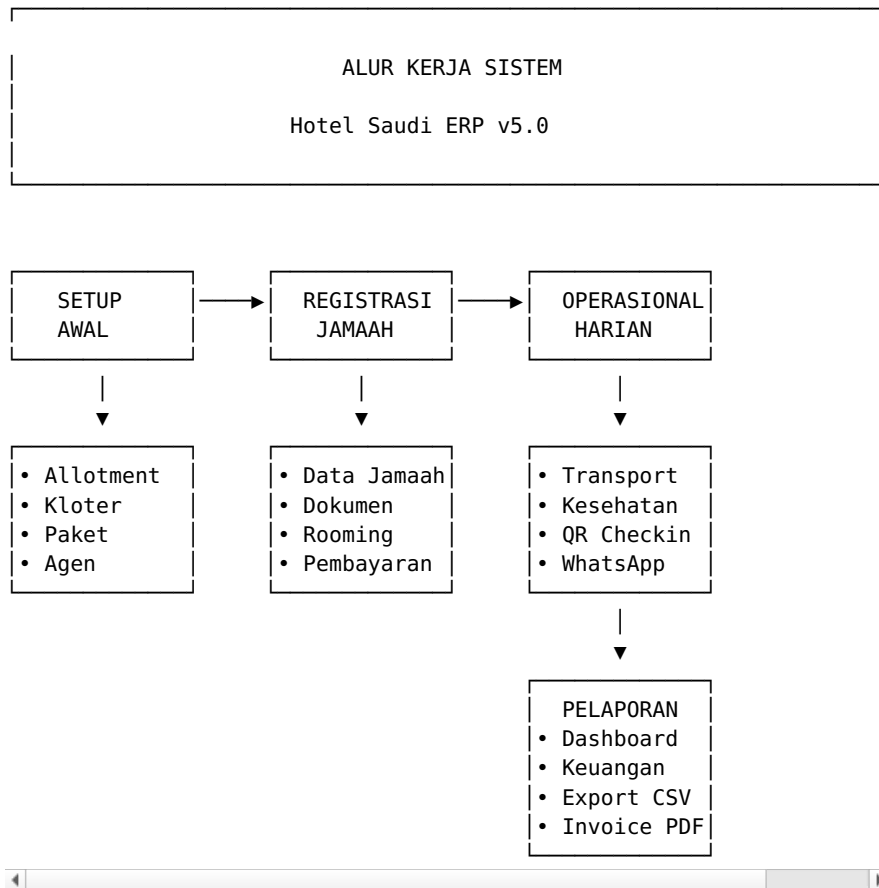


Hotel Saudi ERP - Workflow & Alur Kerja

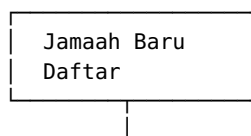
OWL AI Agent

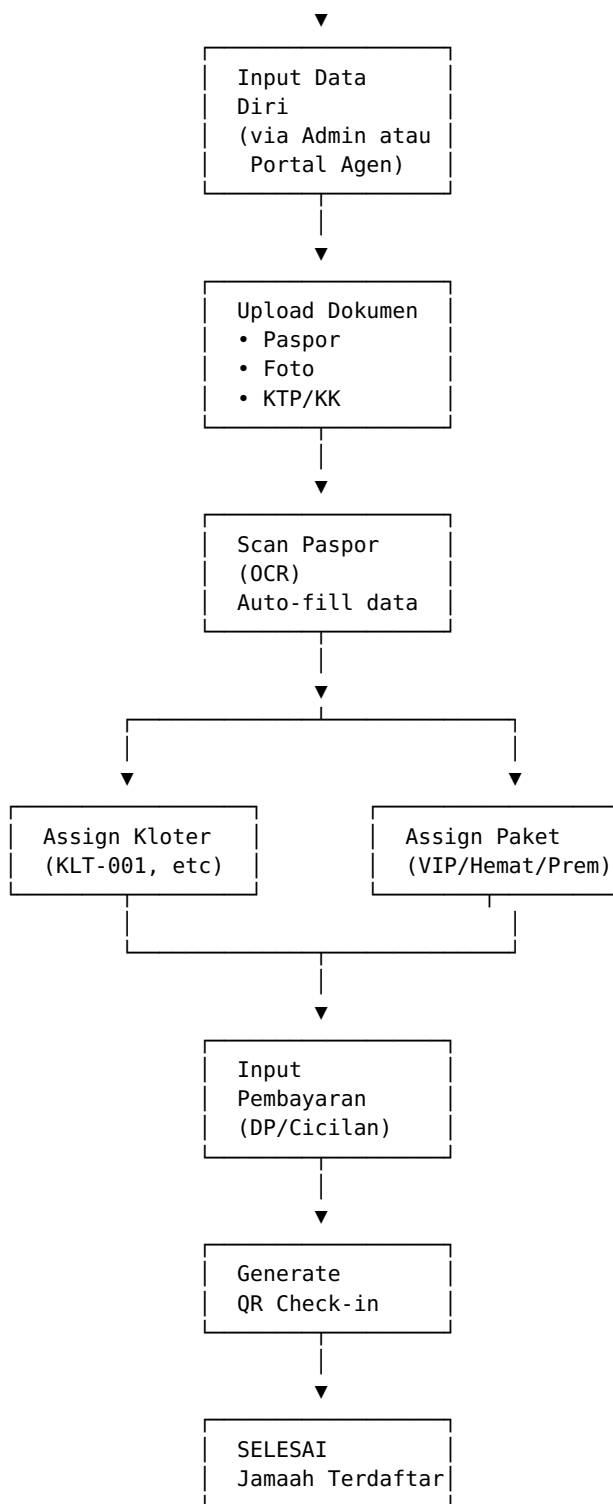
HOTEL SAUDI ERP – Workflow & Alur Kerja

1. WORKFLOW UTAMA (End-to-End)



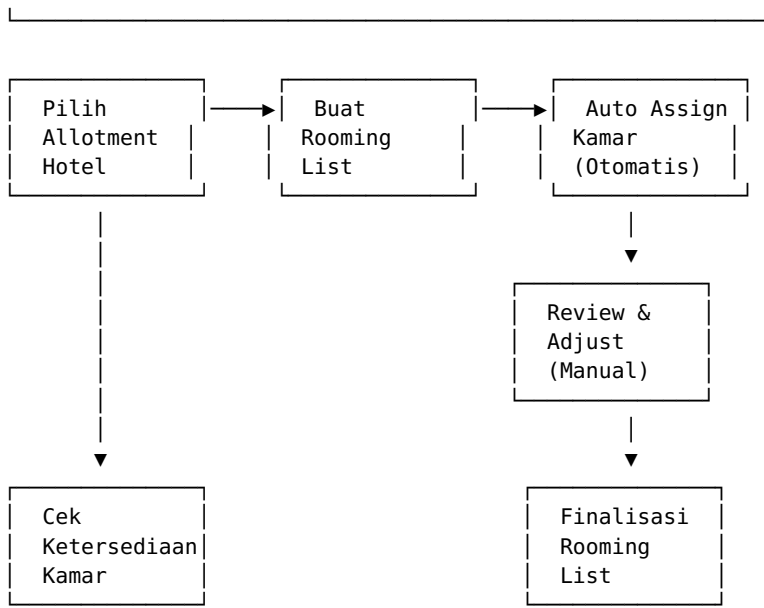
2. WORKFLOW REGISTRASI JAMAAH



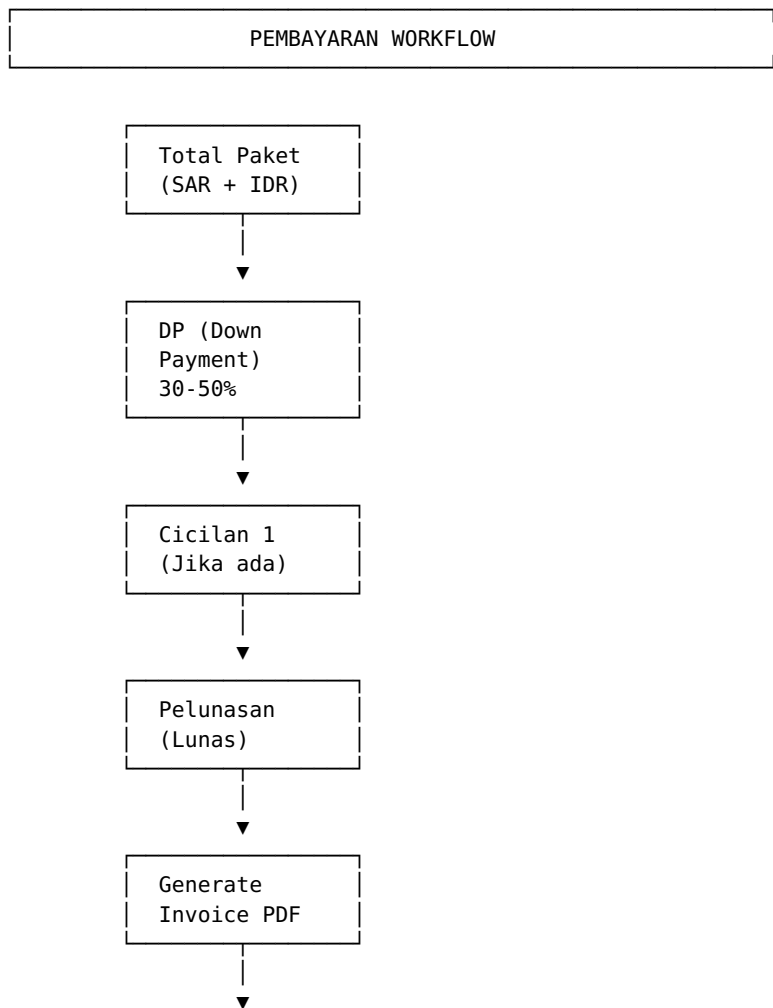


3. WORKFLOW ROOMING (Penempatan Kamar)

ROOMING WORKFLOW



4. WORKFLOW PEMBAYARAN



Kirim via
WhatsApp/Email

Status: DP → CICILAN → LUNAS
(Tracking di menu □ Pembayaran)

5. WORKFLOW QR CHECK-IN

QR CHECK-IN WORKFLOW

ADMIN SIDE

Generate QR
• Pilih
Jamaah
• Pilih
Event
• Set
Lokasi



QR Code
Muncul
(Gambar)



Print /
Screenshot

PUBLIC SIDE

Buka
/checkin/
di HP/
Tablet



Scan QR
via Kamera
atau Input
Token



Verifikasi
Token



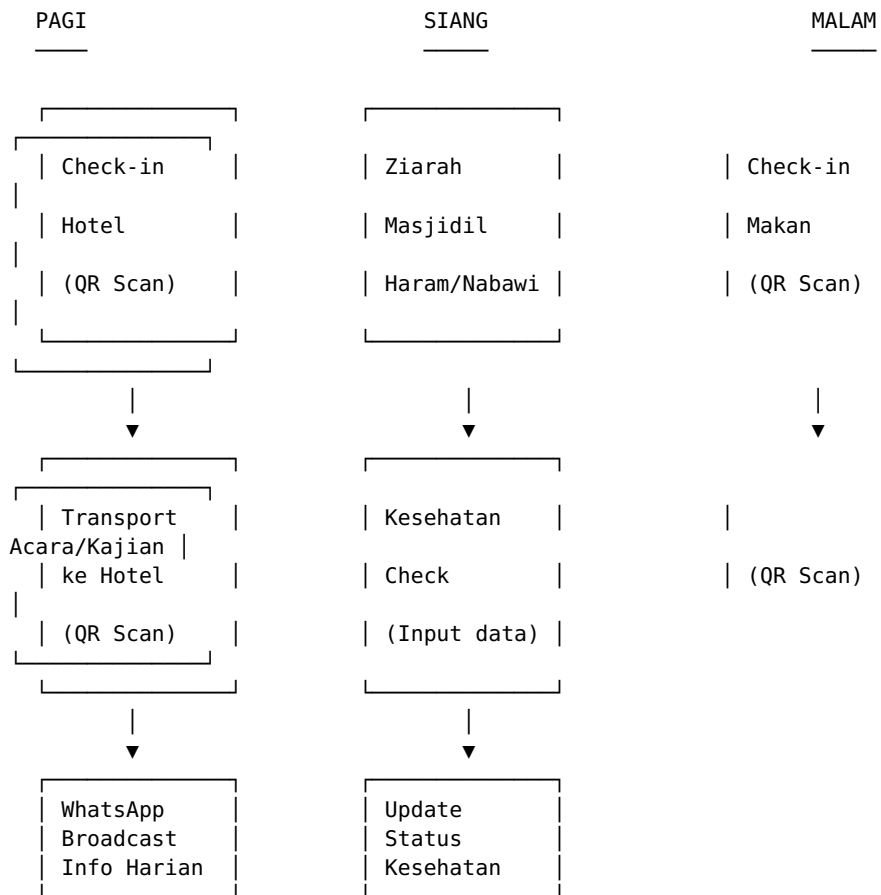
✓ Berhasil
• Nama
• Event
• Lokasi
• Waktu

Event Types:

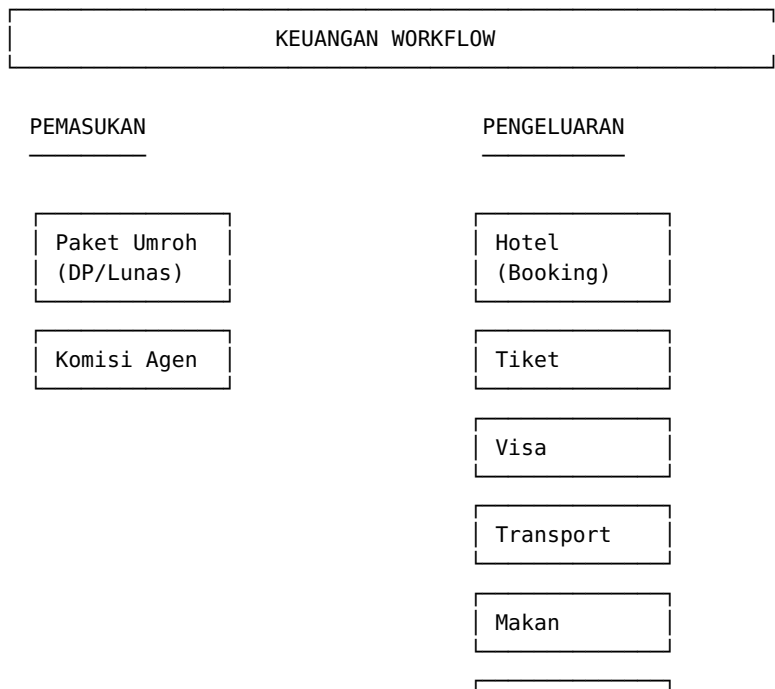
- Check-in Hotel
- Ziarah
- Check-out Hotel
- Makan
- Check-in Bandara
- Transport
- Acara/Kajian

6. WORKFLOW OPERASIONAL HARIAN

OPERASIONAL HARIAN (Di Lapangan)



7. WORKFLOW KEUANGAN

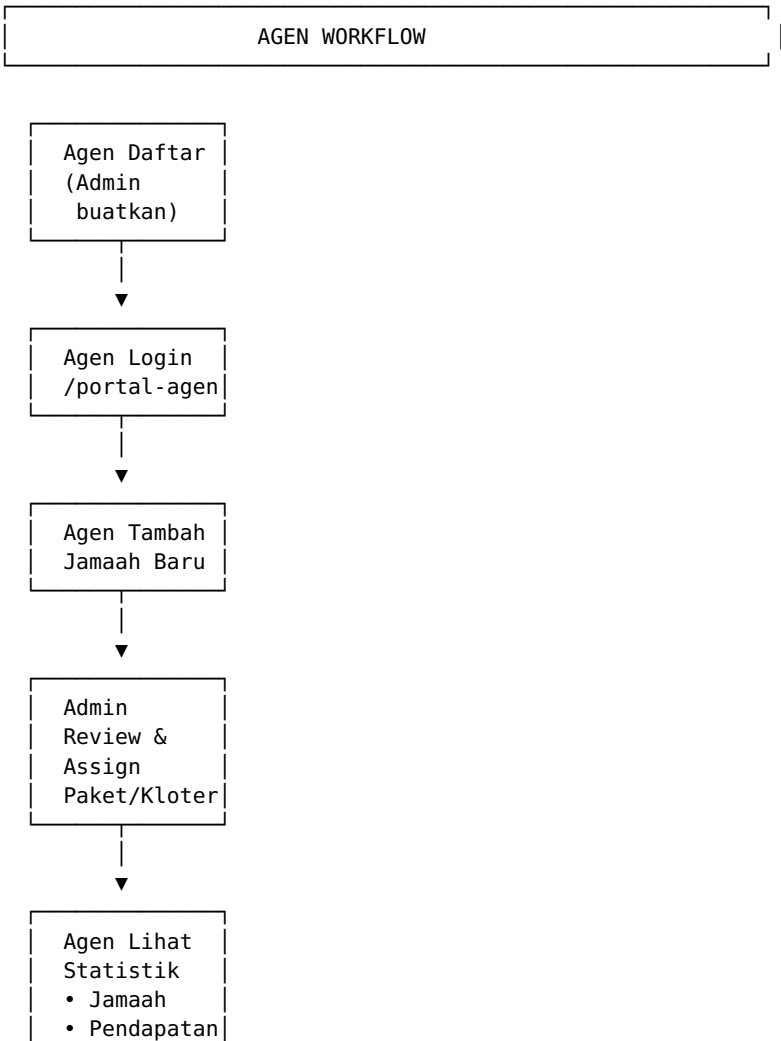


- Kesehatan
- Ziarah
- Komisi Agen
- Operasional

LAPORAN KEUANGAN

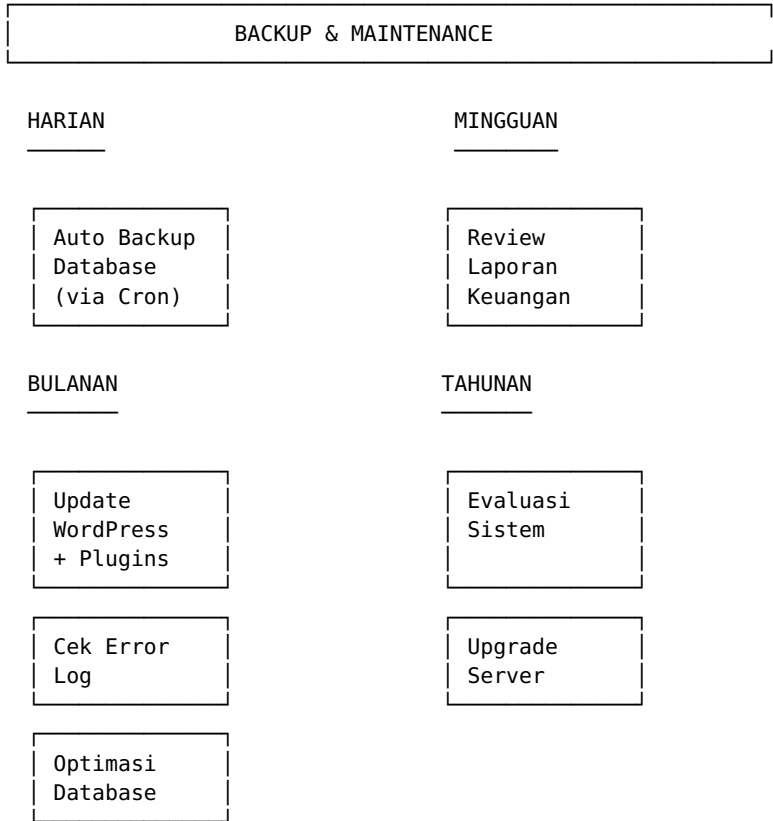
- Total Pemasukan (SAR)
- Total Pengeluaran
- Saldo
- Per Kategori
- Per Kloter

8. WORKFLOW AGEN/RESELLER

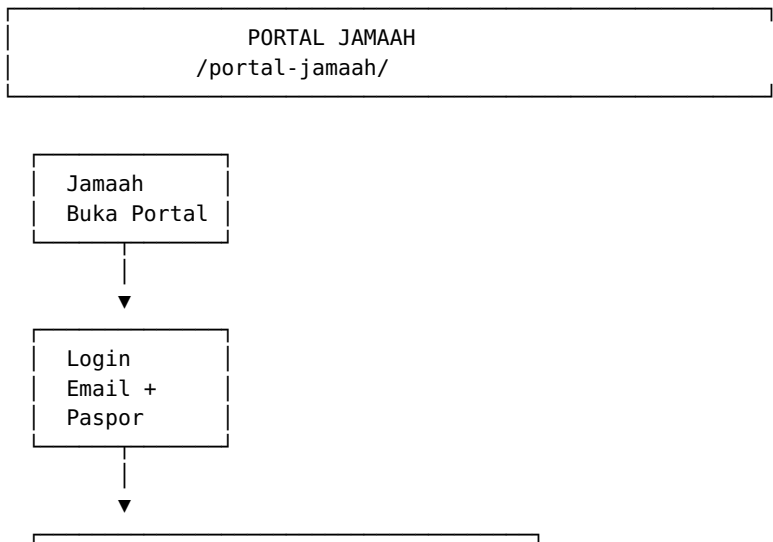


- Komisi

9. WORKFLOW BACKUP & MAINTENANCE



10. PORTAL JAMAAH WORKFLOW



DASHBOARD JAMAAH

🏠 Data Diri

- Nama, Email, Telepon
- Nomor Paspor

➔ Paket

- Nama Paket
- Hotel, Maskapai
- Tanggal Berangkat/Pulang

🚉 🚉 🚉 Kloter

- Kode Kloter
- Jadwal

📄 Dokumen

- Status Visa, Tiket, Vaksin

🚗 Transport

- Jadwal, Rute, Supir

♥ Kesehatan

- Riwayat Medical

**Dokumen ini adalah bagian dari Hotel Saudi ERP
Documentation v5.0 Untuk deployment guide, lihat file utama.**